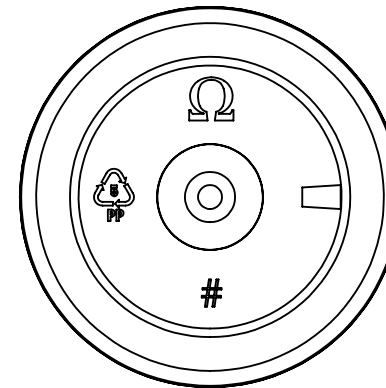
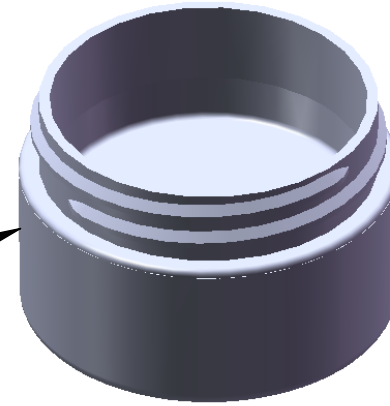


"FROSTED"
Texture
Finish



Bottom
View

Notes:

1. Material: Polypropylene (PP)
2. Weight: Approx 12 grams
3. Overflow Capacity: Approx 23 cc
4. Thread: 6 TPI
5. Printable / Label area:
5.94" wraparound x 0.53" height
(labels should account for 1/2° wall taper)
6. Omega Part # 3425

DIMENSION	TOLERANCE
.00	.015
.000	.010



15210 Desman Rd.
La Mirada, CA 90638
(714) 670-6400
omegapkg.com

PROPRIETARY AND CONFIDENTIAL
THE INFORMATION CONTAINED
IN THIS DRAWING IS THE SOLE
PROPERTY OF OMEGA PKG.
ANY REPRODUCTION IN PART OR
AS A WHOLE WITHOUT THE
WRITTEN PERMISSION OF OMEGA
PACKAGING IS PROHIBITED.

REVISION	DATE
IR	6/23/14
LAST	DATE
EZ	12/10/2019

0.5oz 48mm
Straight Base FROSTED
Double Wall Jar

DWG. NO.	SCALE
3425-0.5-48-SB-DWJ	1:1