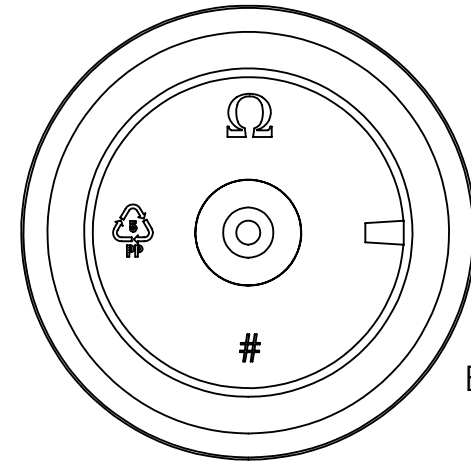
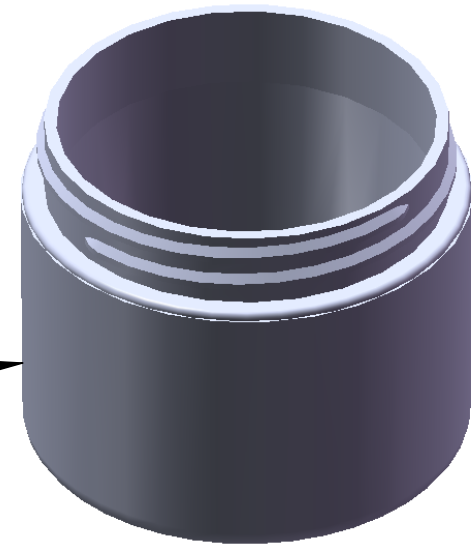


"FROSTED"
Texture
Finish



Bottom
View

Notes:

1. Material: Polypropylene (PP)
2. Weight: Approx 21 grams
3. Overflow Capacity: Approx 76 cc
4. Thread: 6 TPI
5. Printable / Label area:
7.10" wraparound x 1.13" height
(labels should account for 1/2° wall taper)
6. Omega Part # 3500

DIMENSION	TOLERANCE
.00	.015
.000	.010

PROPRIETARY AND CONFIDENTIAL
 THE INFORMATION CONTAINED
 IN THIS DRAWING IS THE SOLE
 PROPERTY OF OMEGA PKG.
 ANY REPRODUCTION IN PART OR
 AS A WHOLE WITHOUT THE
 WRITTEN PERMISSION OF OMEGA
 PACKAGING IS PROHIBITED.



15210 Desman Rd.
 La Mirada, CA 90638
 (714) 670-6400
 omegapkg.com

REVISION	DATE	2oz 58mm Straight Base FROSTED Double Wall Jar	DWG. NO. 3500-2-58-SB-DWJ	SCALE 1:1
IR	12/02/2013			
EZ	12/09/2019			