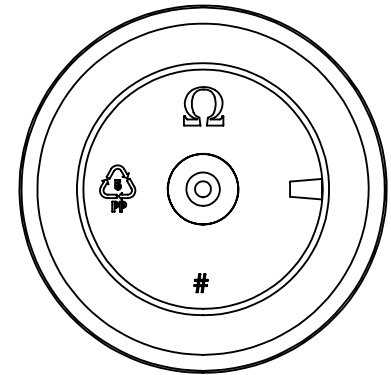
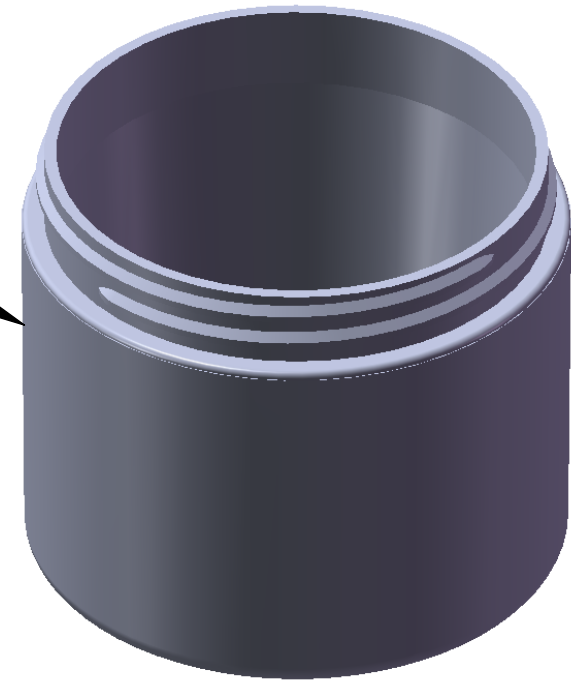


"FROSTED"
Texture
Finish



Bottom
View
(not to scale)

- Notes:
1. Material: Polypropylene (PP)
 2. Weight: Approx 33 grams
 3. Overflow Capacity: Approx 148 cc
 4. Thread: 6 TPI
 5. Printable / Label area:
8.70" wraparound x 1.59" height
(labels should account for 1/2° wall taper)
 6. Omega Part # 3525

DIMENSION	TOLERANCE
.00	.015
.000	.010



15210 Desman Rd.
La Mirada, CA 90638
(714) 670-6400
omegapkg.com

PROPRIETARY AND CONFIDENTIAL
THE INFORMATION CONTAINED
IN THIS DRAWING IS THE SOLE
PROPERTY OF OMEGA PKG.
ANY REPRODUCTION IN PART OR
AS A WHOLE WITHOUT THE
WRITTEN PERMISSION OF OMEGA
PACKAGING IS PROHIBITED.

REVISION	DATE
IR	12/02/2013
EZ	12/09/2019

4oz 70mm
Straight Base FROSTED
Double Wall Jar

DWG. NO.	3525-4-70-SB-DWJ	SCALE	1:1
----------	------------------	-------	-----