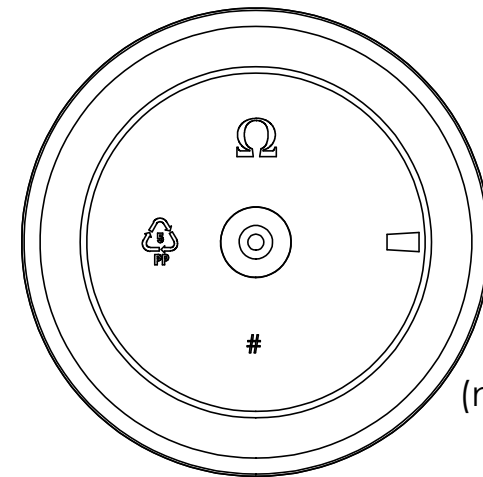
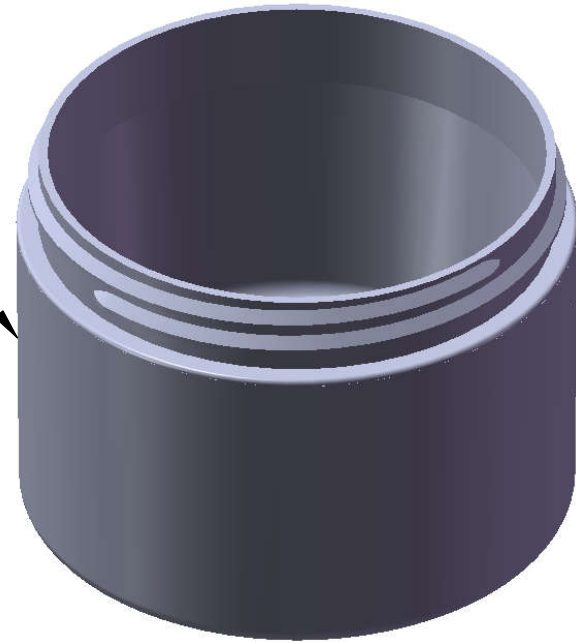


"FROSTED"
Texture
Finish




Bottom
View
(not to scale)

Notes:

1. Material: Polypropylene (PP)
2. Weight: Approx 50 grams
3. Overflow Capacity: Approx 283 cc
4. Thread: 5 TPI
5. Printable / Label area:
11.15" wraparound x 1.75" height
(labels should account for 1/2° wall taper)
6. Omega Part # 3600

DIMENSION	TOLERANCE
.00	.015
.000	.010

PROPRIETARY AND CONFIDENTIAL
 THE INFORMATION CONTAINED
 IN THIS DRAWING IS THE SOLE
 PROPERTY OF OMEGA PKG.
 ANY REPRODUCTION IN PART OR
 AS A WHOLE WITHOUT THE
 WRITTEN PERMISSION OF OMEGA
 PACKAGING IS PROHIBITED.

		15210 Desman Rd. La Mirada, CA 90638 (714) 670-6400 omegapkg.com	
		8oz 89mm Straight Base FROSTED Double Wall Jar	
REVISION	DATE	DWG. NO.	SCALE
IR	12/30/2013	3600-8-89-SB-DWJ-Frosted	1:1
IR	1/13/2014		
LAST EZ	DATE 12/09/2019		