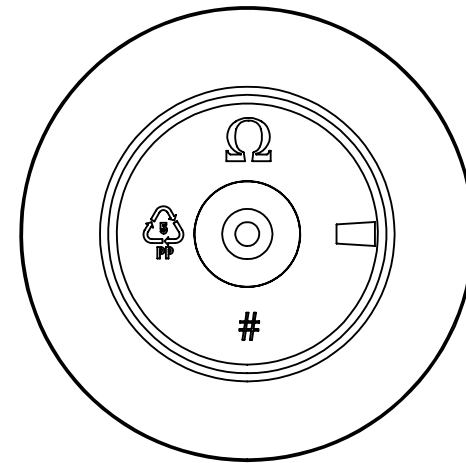
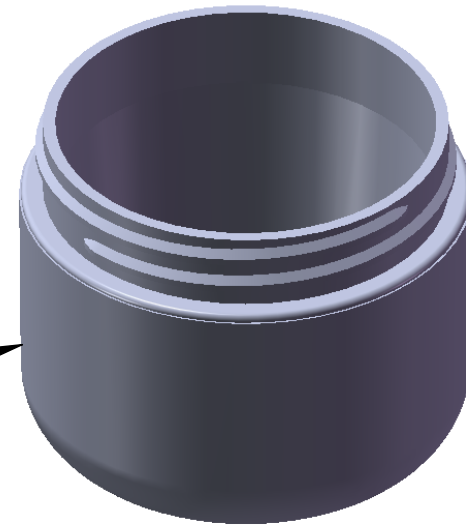


"FROSTED"
Texture
Finish



Bottom
View

Notes:

1. Material: Polypropylene (PP)
2. Weight: Approx 20 grams
3. Overflow Capacity: Approx 76 cc
4. Thread: 6 TPI
5. Printable / Label area:
7.10" wraparound x 0.85" height
(labels should account for 1/2° wall taper)
5. Omega Part # 4500

DIMENSION	TOLERANCE
.00	.015
.000	.010



15210 Desman Rd.
La Mirada, CA 90638
(714) 670-6400
omegapkg.com

PROPRIETARY AND CONFIDENTIAL
THE INFORMATION CONTAINED
IN THIS DRAWING IS THE SOLE
PROPERTY OF OMEGA PKG.
ANY REPRODUCTION IN PART OR
AS A WHOLE WITHOUT THE
WRITTEN PERMISSION OF OMEGA
PACKAGING IS PROHIBITED.

REVISION	DATE
IR	5/31/2013
IR	9/12/2013
IR	12/02/2013
LAST EZ	DATE 12/09/2019

2oz 58mm
Round Base FROSTED
Double Wall Jar

DWG. NO.	SCALE
4500-2-58-RB-DWJ	1:1