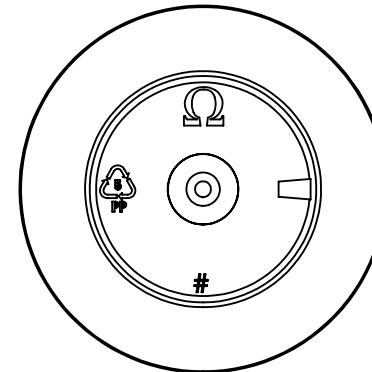
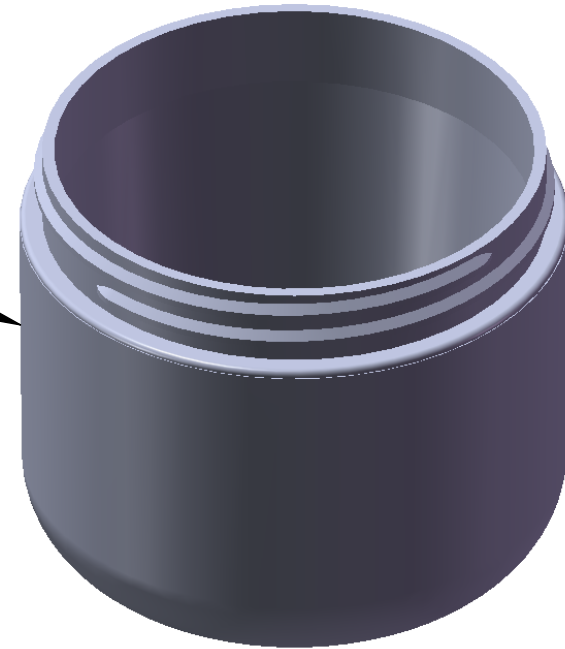


"FROSTED"  
Texture  
Finish




Bottom  
View  
(not to scale)

Notes:

1. Material: Polypropylene (PP)
2. Weight: Approx 31 grams
3. Overflow Capacity: Approx 148 cc
4. Thread: 6 TPI
5. Printable / Label area:  
8.70" wraparound x 1.28" height  
(labels should account for 1/2° wall taper)
6. Omega Part # 4525

DIMENSION	TOLERANCE
.00	.015
.000	.010

**PROPRIETARY AND CONFIDENTIAL**  
THE INFORMATION CONTAINED  
IN THIS DRAWING IS THE SOLE  
PROPERTY OF OMEGA PKG.  
ANY REPRODUCTION IN PART OR  
AS A WHOLE WITHOUT THE  
WRITTEN PERMISSION OF OMEGA  
PACKAGING IS PROHIBITED.

		15210 Desman Rd. La Mirada, CA 90638 (714) 670-6400 omegapkg.com	
		<b>4oz 70mm Round Base FROSTED Double Wall Jar</b>	
REVISION	DATE	DWG. NO.	SCALE
IR	12/02/2013	4525-4-70-RB-DWJ	1:1
IR	1/20/2014		
EZ	12/09/2019		