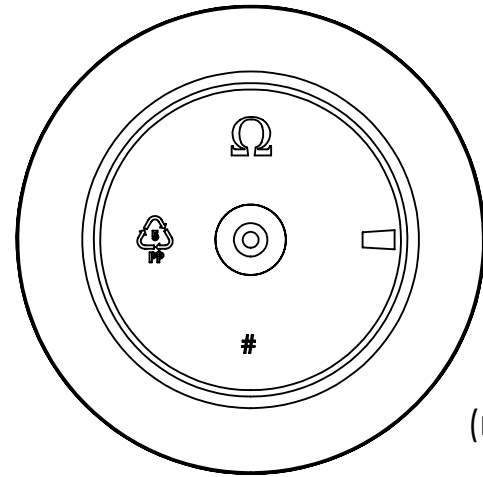
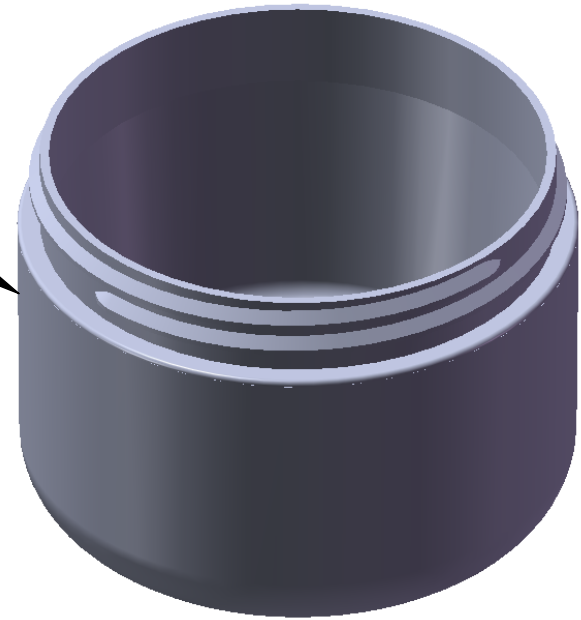


"FROSTED"  
Texture  
Finish



Bottom  
View  
(not to scale)

Notes:

1. Material: Polypropylene (PP)
2. Weight: Approx 48 grams
3. Overflow Capacity: Approx 283 cc
4. Thread: 5 TPI
5. Printable / Label area:  
11.15" wraparound x 1.38" height  
(labels should account for 1/2° wall taper)
6. Omega Part # 4600

DIMENSION	TOLERANCE
.00	.015
.000	.010



15210 Desman Rd.  
La Mirada, CA 90638  
(714) 670-6400  
omegapkg.com

**PROPRIETARY AND CONFIDENTIAL**  
THE INFORMATION CONTAINED  
IN THIS DRAWING IS THE SOLE  
PROPERTY OF OMEGA PKG.  
ANY REPRODUCTION IN PART OR  
AS A WHOLE WITHOUT THE  
WRITTEN PERMISSION OF OMEGA  
PACKAGING IS PROHIBITED.

REVISION	DATE
IR	12/30/2013
IR	1/13/2014
EZ	12/09/2019

8oz 89mm  
Round Base FROSTED  
Double Wall Jar

DWG. NO. 4600-8-89-RB-DWJ	SCALE 1:1
------------------------------	--------------