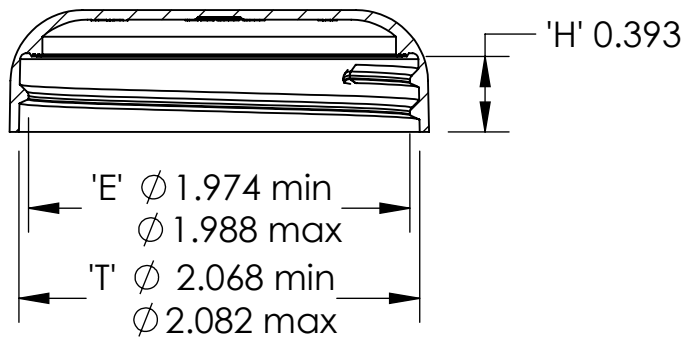
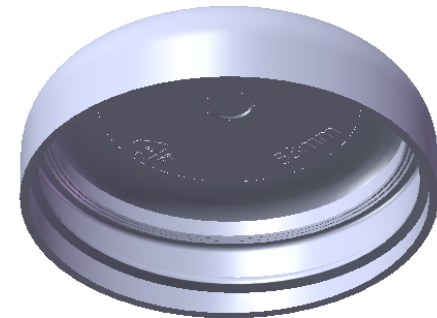


- Notes:
1. Material: Polypropylene (PP)
  2. Weight: Approx 5 grams
  3. Thread: 6 TPI
  4. Printable Area on Top:  $\phi$  1.25" circle
  5. Omega Part # 8150



| DIMENSION | TOLERANCE |
|-----------|-----------|
| .00       | .015      |
| .000      | .010      |



15210 Desman Rd.  
La Mirada, CA 90638  
(714) 670-6400  
omegapkg.com

**PROPRIETARY AND CONFIDENTIAL**  
THE INFORMATION CONTAINED  
IN THIS DRAWING IS THE SOLE  
PROPERTY OF OMEGA PKG.  
ANY REPRODUCTION IN PART OR  
AS A WHOLE WITHOUT THE  
WRITTEN PERMISSION OF OMEGA  
PACKAGING IS PROHIBITED.

| REVISION | DATE       |
|----------|------------|
| IR       | 5/12/2013  |
| EZ       | 12/05/2019 |

|                  |  |                          |              |
|------------------|--|--------------------------|--------------|
| 53mm Dome<br>Cap |  | DWG. NO.<br>8150-53-Dome | SCALE<br>1:1 |
|                  |  |                          |              |