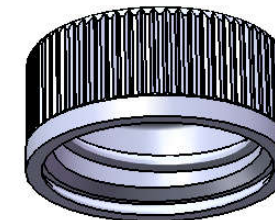


Notes:


1. Material: Polypropylene (PP)
2. Weight: Approx 5 grams (2-piece assembly)
3. Thread: 6 TPI, 28mm/400 finish
4. Printable area on top: Ø 0.75" circle
5. Omega Part # 9800



Proper function of Child-Resistant / Senior-Friendly feature is dependent on various factors including application torque, container material/type, and liner material. Customer must verify particular requirements with Omega before use.

DIMENSION	TOLERANCE
.00	.015
.000	.010

PROPRIETARY AND CONFIDENTIAL
 THE INFORMATION CONTAINED IN THIS DRAWING IS THE SOLE PROPERTY OF OMEGA PKG. ANY REPRODUCTION IN PART OR AS A WHOLE WITHOUT THE WRITTEN PERMISSION OF OMEGA PACKAGING IS PROHIBITED.

		15210 Desman Rd. La Mirada, CA 90638 (714) 670-6400 omegapkg.com	
		28mm/400 CRC (Child-Resistant Cap)	
REVISION	DATE	DWG. NO.	SCALE
LAST	DATE	9800-28-CRC	1:1